

Partnering with Purpose

A Strategic Approach to Community Health Improvement

Kate Lawler, Vice President, Community Impact and Engagement, Endeavor Health
September 25, 2025



**UNITY AMID
UNCERTAINTY**
2025 IHA LEADERSHIP SUMMIT



Mission: Help everyone in our communities be their best.

Service Area Population

4.1M

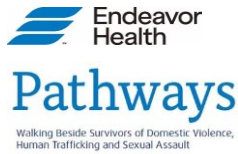
(one-third of Illinois' population)

- **300+** Sites of care across **100+** ambulatory locations
- **9 Hospitals**
- Serving **~1.45 million** patients



**UNITY AMID
UNCERTAINTY**
2025 IHA LEADERSHIP SUMMIT

Early Lessons in Partnership



**UNITY AMID
UNCERTAINTY**
2025 IHA LEADERSHIP SUMMIT

3

The Partnership Dilemma

- Resources we need for strategic community partnerships = same resources we need to deliver excellent care (People, IT, Analytics)
- Those resources are stretched within our walls
- Compels us to focus where mission, impact, and mutual benefit meet



**UNITY AMID
UNCERTAINTY**
2025 IHA LEADERSHIP SUMMIT

4

Strategic Framework

WE ASPIRE TO A FUTURE WHERE:



A person's zip code does not determine how long they live



Hunger and homelessness in our communities are history



The healthcare workforce is thriving and representative of the communities we serve

FOCUS AREAS

Access to Care
Physical and Behavioral Health

Preventable & Chronic Conditions
Diabetes, Heart Disease, Cancer

Social Drivers of Health (SDOH)
Food, Housing, Workforce Development



Community Investment Fund

Impact-to-Date

- 2022 launch
- \$30.2M awarded
- 54 Partnerships
- 640,000 lives touched
- 500+ jobs created/supported
- 350+ team members serve as liaisons and application

Behavioral Health	Access to Care	Food	Housing	Workforce Development



Partnering with Purpose



Connections for the Homeless
Access to Care and Medical Respite



Elmhurst Yorkfield Food Pantry
Food Security



ASPIRE Lake County
Workforce Development

**UNITY AMID
UNCERTAINTY**
2025 IHA LEADERSHIP SUMMIT

Connections for the Homeless (Evanston)



WE ASPIRE TO A FUTURE WHERE
Homelessness in our communities is history

Partnership Goals

- Reduce ED visits and readmissions
- Improve coordination
- Increase respite beds

Hospital Levers for Impact

- Simplify access
- Share records for care coordination
- Teach residents
- Advocate for affordable housing
- Measure outcomes



**UNITY AMID
UNCERTAINTY**
2025 IHA LEADERSHIP SUMMIT

Elmhurst Yorkfield Food Pantry



WE ASPIRE TO A FUTURE WHERE
Homelessness in our communities is history

Partnership Goals

- Connect to food and benefits
- Build capacity
- Improve health outcomes

Hospital Levers for Impact

- Raise awareness (CHNA)
- Reduce stigma
- Screen and refer
- Track outcomes



ASPIRE Lake County



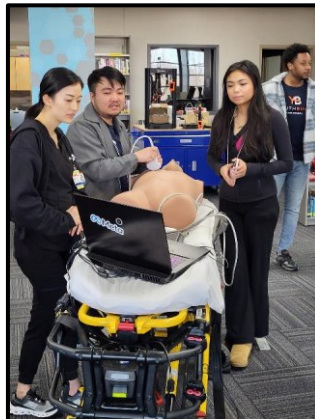
WE ASPIRE TO A FUTURE WHERE
The healthcare workforce is thriving and representative
of the communities we serve

Partnership Goals

- Expand career exposure
- Fill "hot jobs"

Hospital Levers for Impact

- Mentor students and community members
- Hire locally
- Leverage philanthropy



**UNITY AMID
UNCERTAINTY**
2025 IHA LEADERSHIP SUMMIT

Lessons Learned

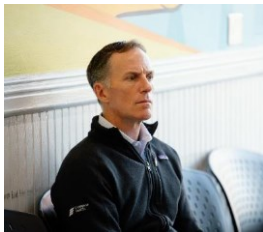
- Demonstrating impact takes time and resources to prove – start with pilots
- Trade-offs exist between broad community goodwill and deep investment and integration – use a spectrum partnership models including key convener role
- You cannot go it alone – collaboration with government and philanthropy supports sustainability
- Team member engagement infuses community commitment into organizational culture



**UNITY AMID
UNCERTAINTY**
2025 IHA LEADERSHIP SUMMIT

11

Team Members Connecting with Purpose



**UNITY AMID
UNCERTAINTY**
2025 IHA LEADERSHIP SUMMIT

12

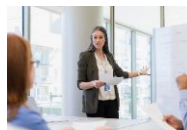
Questions?



**UNITY AMID
UNCERTAINTY**
2025 IHA LEADERSHIP SUMMIT



**UNITY AMID
UNCERTAINTY**
2025 IHA LEADERSHIP SUMMIT



IHA Illinois Health
and Hospital
Association